

Lilidorei Nets

Re-create some of our Lilidorei clan's houses using Maths. The **net** of a 3D shape is what it looks like if it is open out flat. There are many types of nets for different 3D shapes. A net is made from **polygons** (flat shape with straight sides) that can be folded and joined to make a polyhedron. Triangles, squares, rectangles, pentagons and hexagons are examples of polygons. A **polyhedron** is a 3D shape with faces made from polygons. Cubes, cuboids, tetrahedron and prisms are examples of polyhedron.

Using the nets (on the following pages), create some of the clan's houses from the Lilidorei village.

Elves



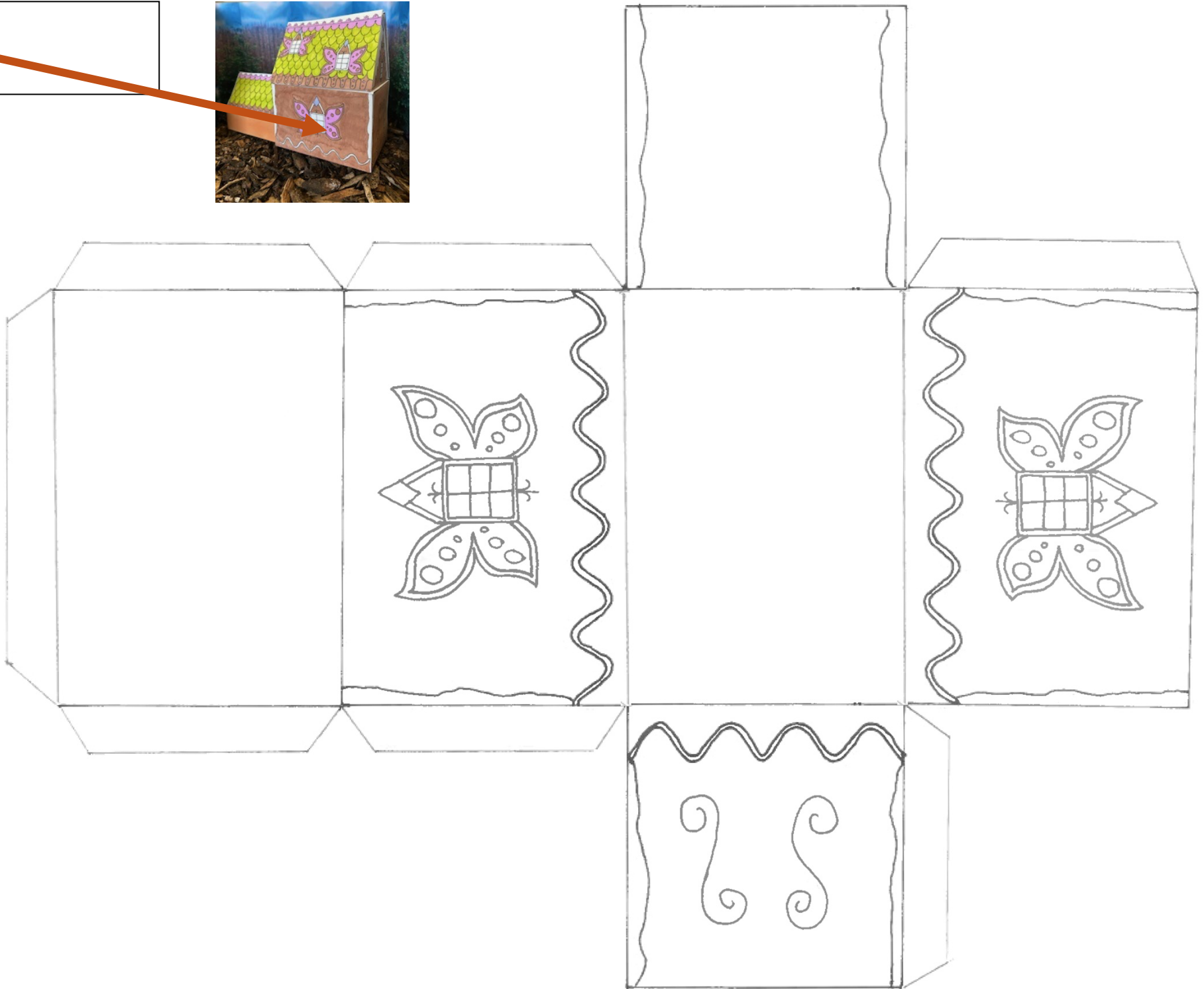
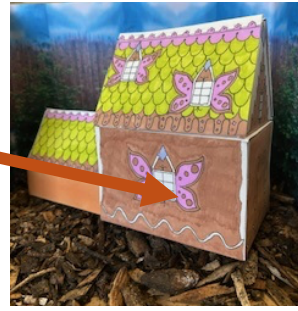
Pixies



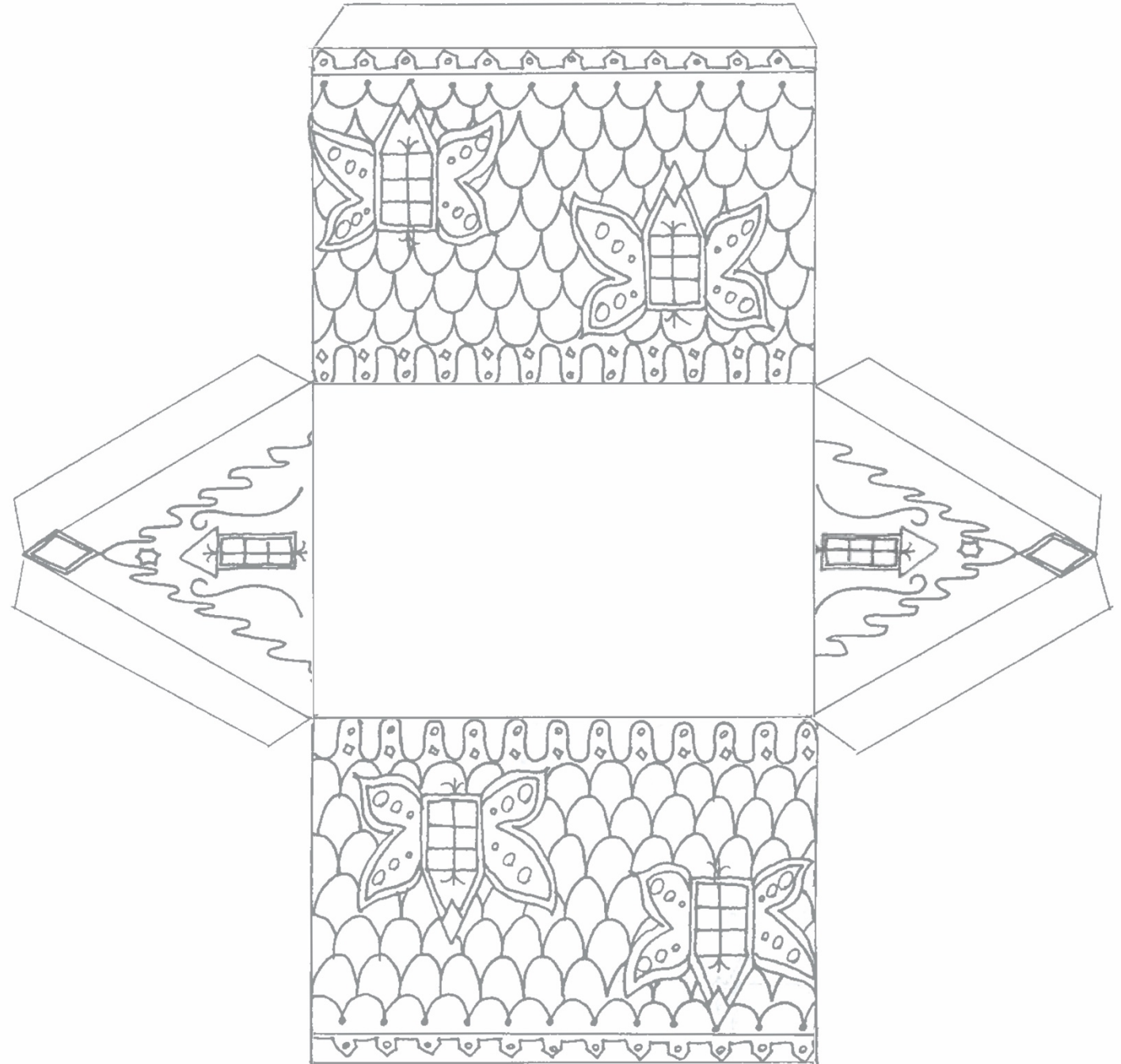
Party Hut



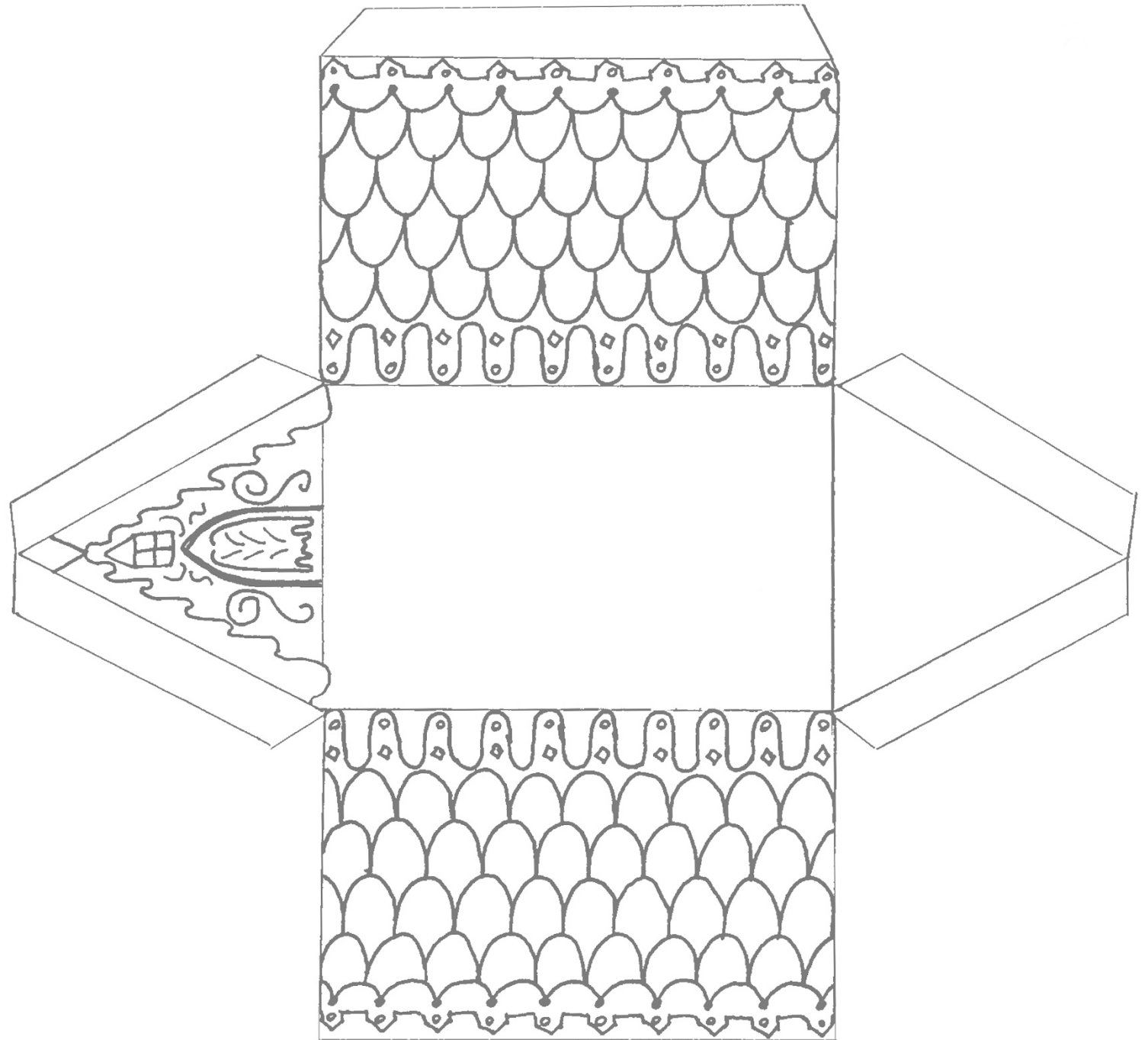
Elves House One
Shape – Cuboid
Print – A3 card



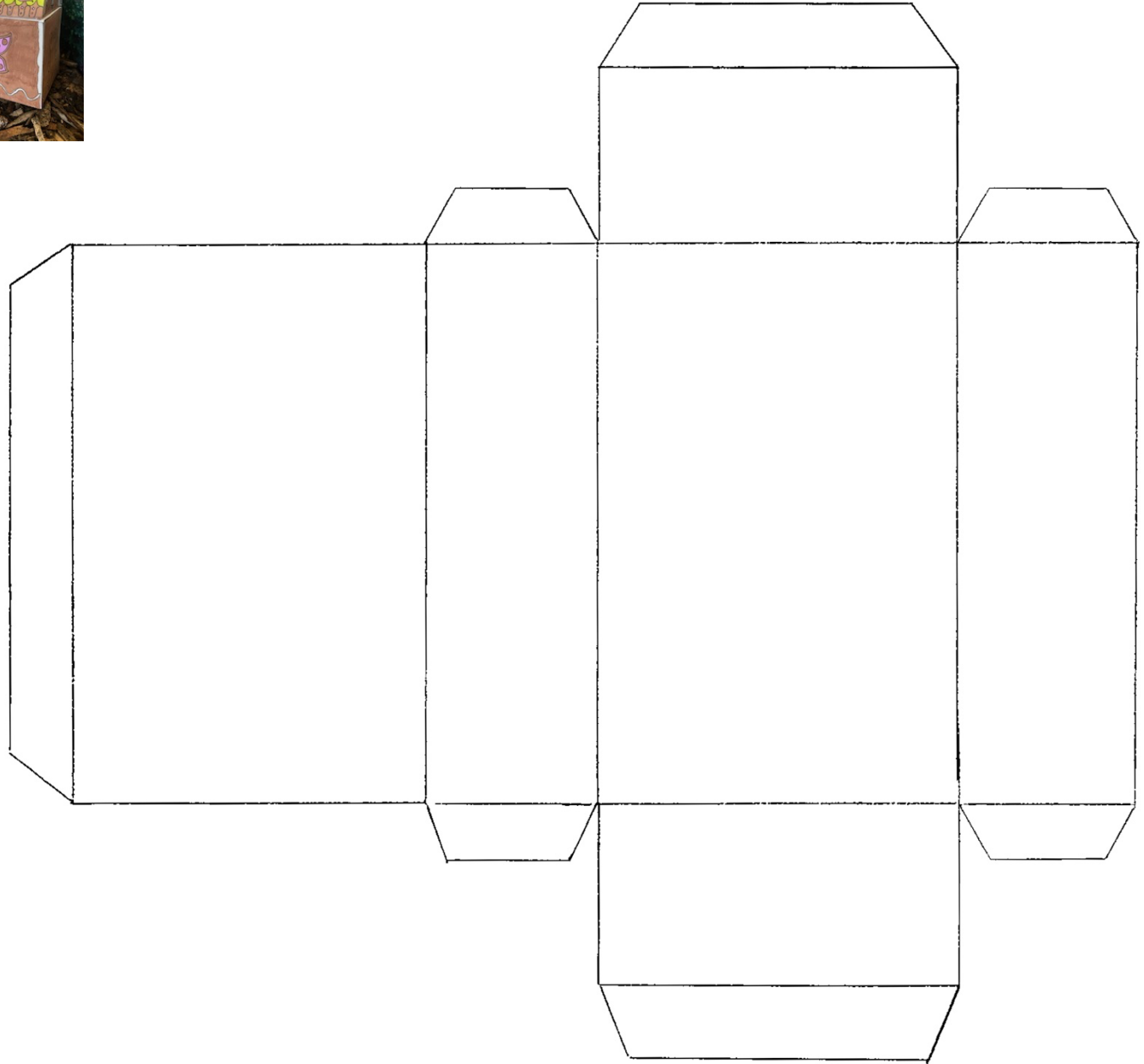
Elves House Two
Shape – Triangular Prism
Print – A3 Card



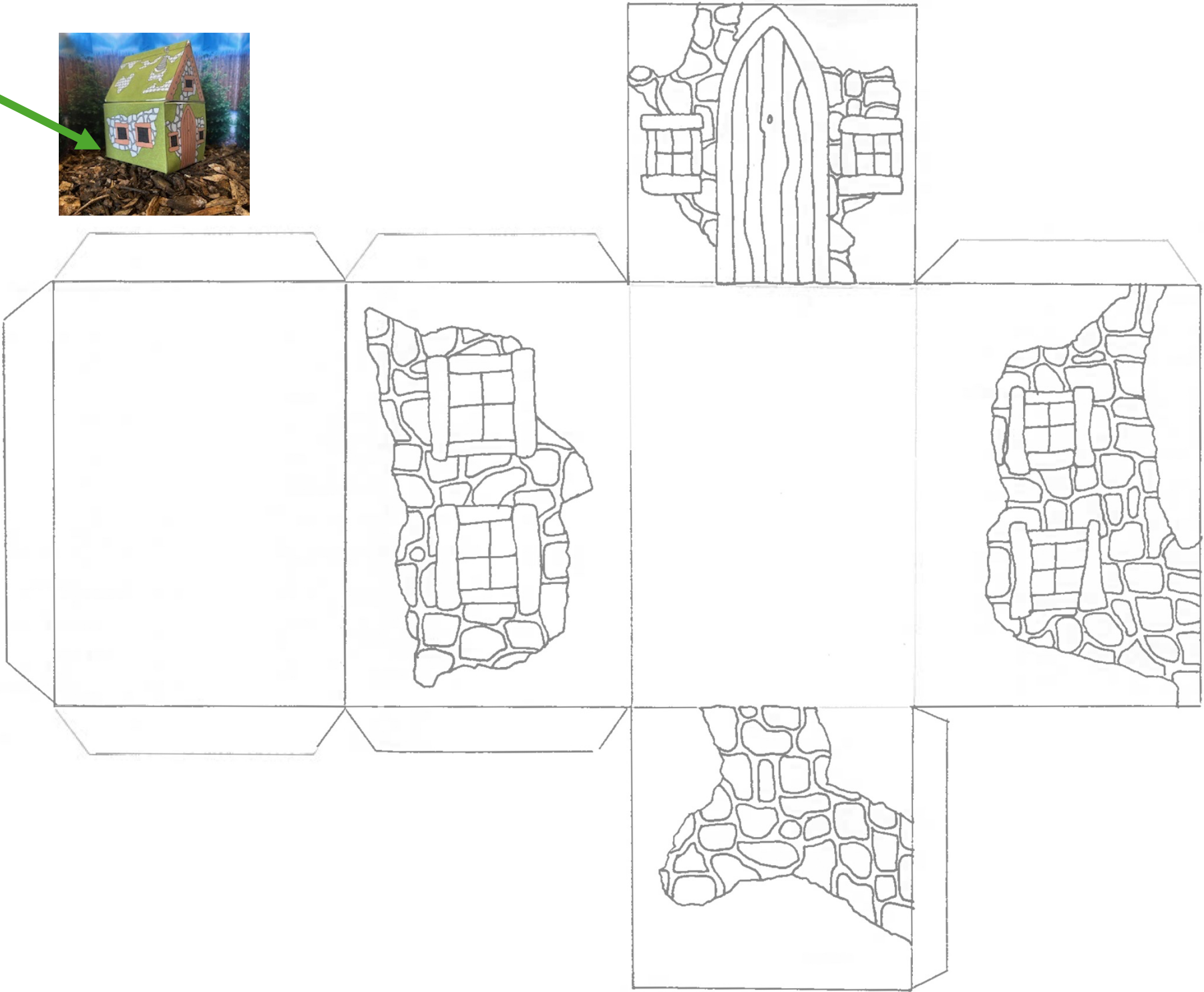
Elves House Three
Shape – Triangular Prism
Print – A4 card



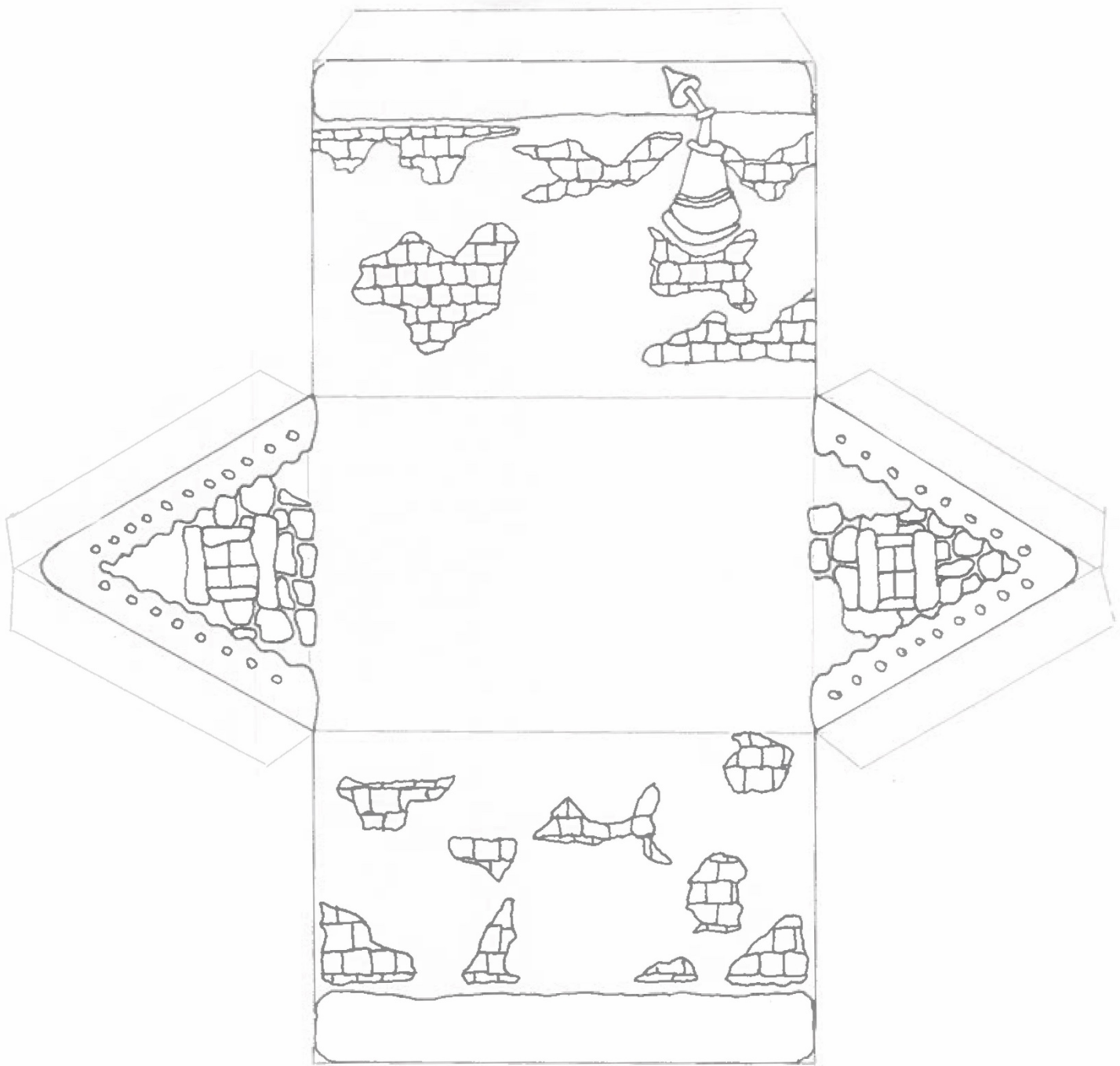
Elves House Four
Shape – Cuboid
Print – A4 card



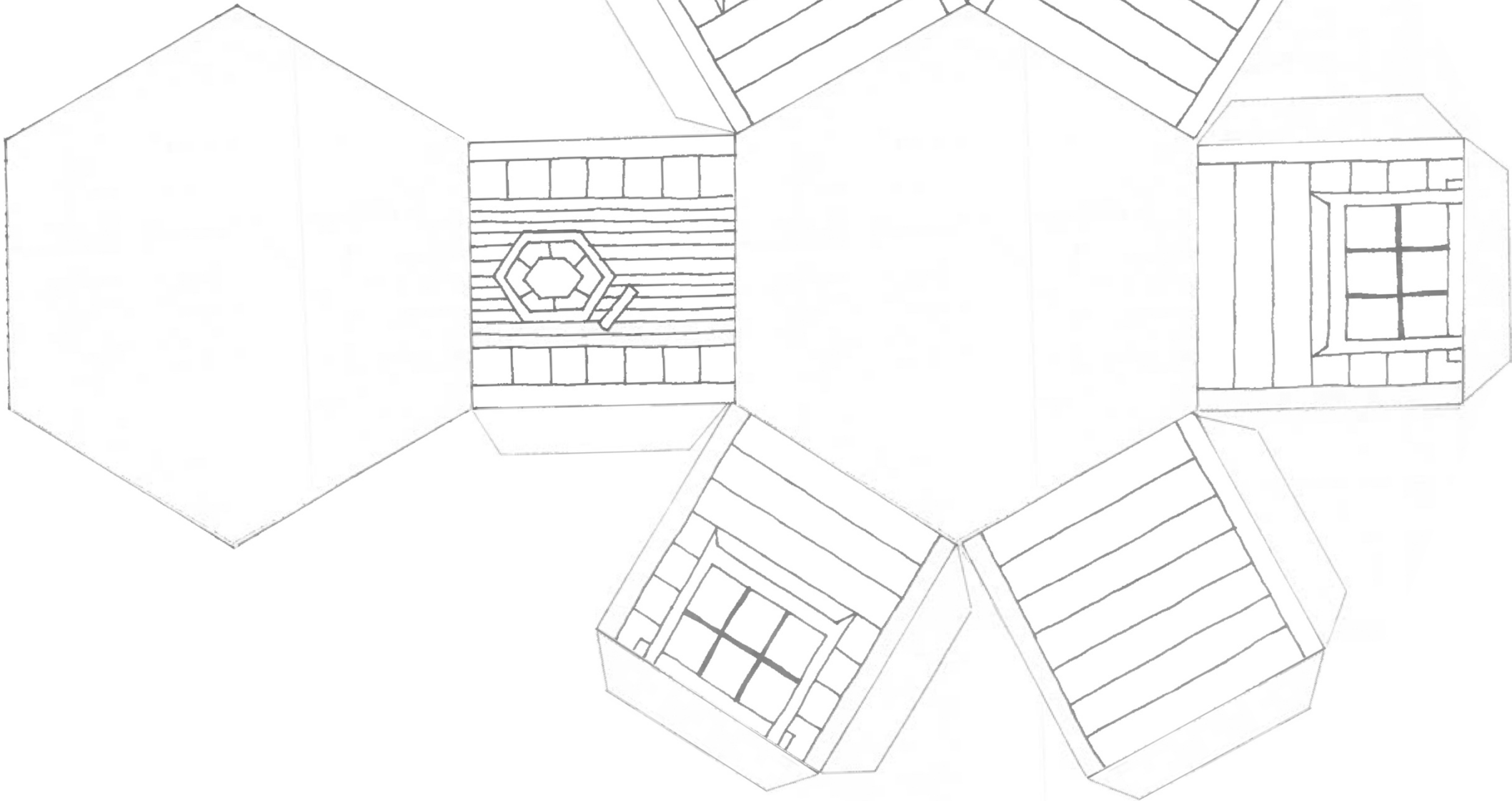
Pixies House One
Shape – Cuboid
Print – A3 card



Pixies House Two
Shape – Triangular Prism
Print – A3 card



Party Hut One
Shape – Hexagonal Prism
Print – A3 card



Party Hut Two
Shape – Hexagonal Pyramid
Print – A3 card

